

Drapery Design Decisions

With Casa Fiora, you have many options for styling and enhancing your draperies from top to bottom. Please fill out the following for each window you plan to dress.

Room: _____

Window Name: _____

Window Type:

- (A) Single window / door
 (B) Multiple windows grouped together, large picture window or French doors

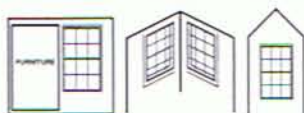


Flora suggestion: This planner is designed for standard windows. For complex installations such as bay windows, sliding glass doors / windows, or bowed windows, we recommend contacting your retailer or a professional installer.

Window Obstructions _____

If this window is close to an obstruction such as a wall, the ceiling, a doorway, furniture or a furnace return, please list the distance from the outer edge of the window casing to the obstruction:

- Obstruction to the left: _____ inches
 Obstruction to the right: _____ inches
 No obstructions



Drapery Fabric _____

You can view Casa Fiora fabrics at your retailer or online at www.casafiora.com. List your favorite fabrics here if you wish:

Top Styling _____

- (A) French Pleat (D) Laurel Pleat (F) Basic Rod Pocket
 (B) Parisian Pleat (E) Monaco Pleat (G) Waterfall Rod Pocket
 (C) Goblet Pleat



A



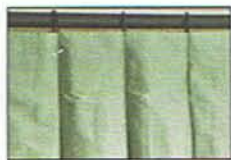
B



C



D



E



F



G

Bottom Styling _____

How do you want your draperies to fall onto the floor?

- (A) Floor length – gives a clean, traditional look
 (B) Trouser break – a few extra inches will allow the draperies to “break” just so onto the floor
 (C) Full 6” puddle – a ball-gown presentation that adds opulence and style



A



B



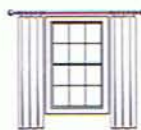
C

Flora suggestion: Specify puddle length for decorative, pleated draperies only to avoid dragging the fabric on the floor when opening and closing draperies.

Side Styling _____

When opened, how do you want your draperies to fall?

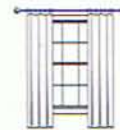
- (A) Completely off the window
 (B) Covering the outside casing or trim
 (C) Reaching over the edge of the window pane



A



B



C

Decorative or Operable _____

Note: Decorative is recommended for non-pleated draperies.

- Operable (open & close functionality)
 Decorative only (stationary)

Lining _____

- Standard lining – lining and interlining (pleated) or lining (rod pocket)
 Blackout lining – replaces standard lining for better light control

Returns _____

Please indicate if you want your drapery panels to return (wrap around) to the wall. Note: We use a standard return of 3.5” which works with all Casa Fiora hardware. Return option is not available for non-pleated draperies.

- Yes
 No

Drapery Enhancements _____

- Add fabric covered buttons (available on Goblet or French Pleat only)
 Add Trim (Not available on Waterfall Rod Pocket)



Hardware and Measurements

Hardware should add the perfect emphasis to your draperies and blend artfully with your decorating style. In Fiora's eyes, it's yet another chance to create fashion and flair.

Hardware

Will you use your own hardware or do you plan to purchase hardware from Casa Fiora?

- Purchase Casa Fiora hardware
- Use existing / other hardware source – skip to "Measurements – existing / other hardware source"

Casa Fiora hardware selection

Please check our Web site (www.casafiora.com) or your retailer to see available ensembles and finishes and fill out your preferences here.

Collection / Ensemble:

Finish:

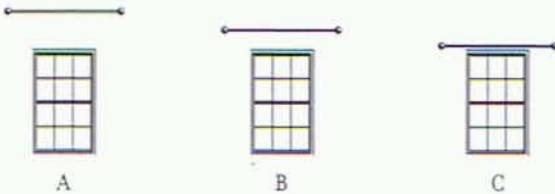
*Bracket:

*Hold Back:

**Villabella line only*

Now, please indicate where you'd like to place your rod:

- (A) High – almost reaching the ceiling
- (B) Midway – half-way between the ceiling and the top of the window casing
- (C) Low – just above the window casing
- (D) If you prefer a specific location, please measure from the floor to the spot that you want to place the center of the rod: _____ inches



Fiora design tip: *Placing the rod high will give the effect of higher ceilings. Midway is a fresh look that is currently very popular, and a lower rod provides a traditional, classic look. Any place will look great – it's all up to you!*

Comments:

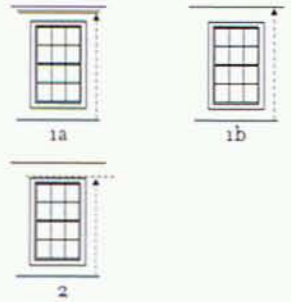
Measurements

Fiora suggestion: *For precise measurements, use a metal measuring tape instead of a ruler or cloth tape measure. Also, even if windows appear to be the same size, be sure to measure all of the windows you plan to dress.*

If purchasing Casa Fiora hardware

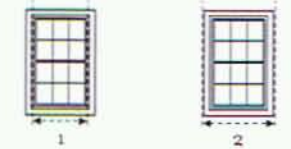
Measuring Length:

1. Do you have molding next to your ceiling?
 - a. If Yes - Measure from the floor to the bottom of the molding: _____ inches
 - b. If No - Measure from the floor to the ceiling: _____ inches
2. Now measure from the floor to the top of the window casing or, if you have woodwork, the window trim: _____ inches



Measuring Width:

1. Measure from inside jamb to inside jamb (the jamb is where the window panes meet the encasing wall or woodwork): _____ inches
2. Measure from the outside casing/trim on one side to the outside casing/trim on the other side: _____ inches

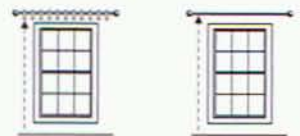


Existing / other hardware source

If you are using hardware other than ours, please be sure your hardware is installed before you take these measurements!

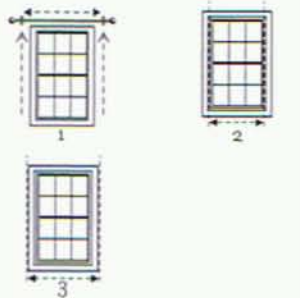
Measuring Length:

- If using a traditional rod with rings that will hold our drapery hooks or a traverse rod with faux rings, measure from the floor to the bottom of the rings: _____ inches
- If using a traverse rod, measure from the floor to the bottom of the rod: _____ inches



Measuring Width

1. Measure the space from inside of bracket to inside of bracket: _____ inches
2. Measure inside jamb to inside jamb (the jamb is where the window panes meet the encasing wall or woodwork): _____ inches
3. Measure from the outside casing/trim on one side to the outside casing/trim on the other side: _____ inches



Thank you! Now take this form to your Casa Fiora retailer to order your draperies. While you're there, don't forget to ask about drapery enhancements, such as fabric-covered buttons and trims and tiebacks, as well as coordinating Casa Fiora products including table skirts, toss pillows and luxurious bed coverings.

www.casafiora.com

Signed: _____

Date: _____